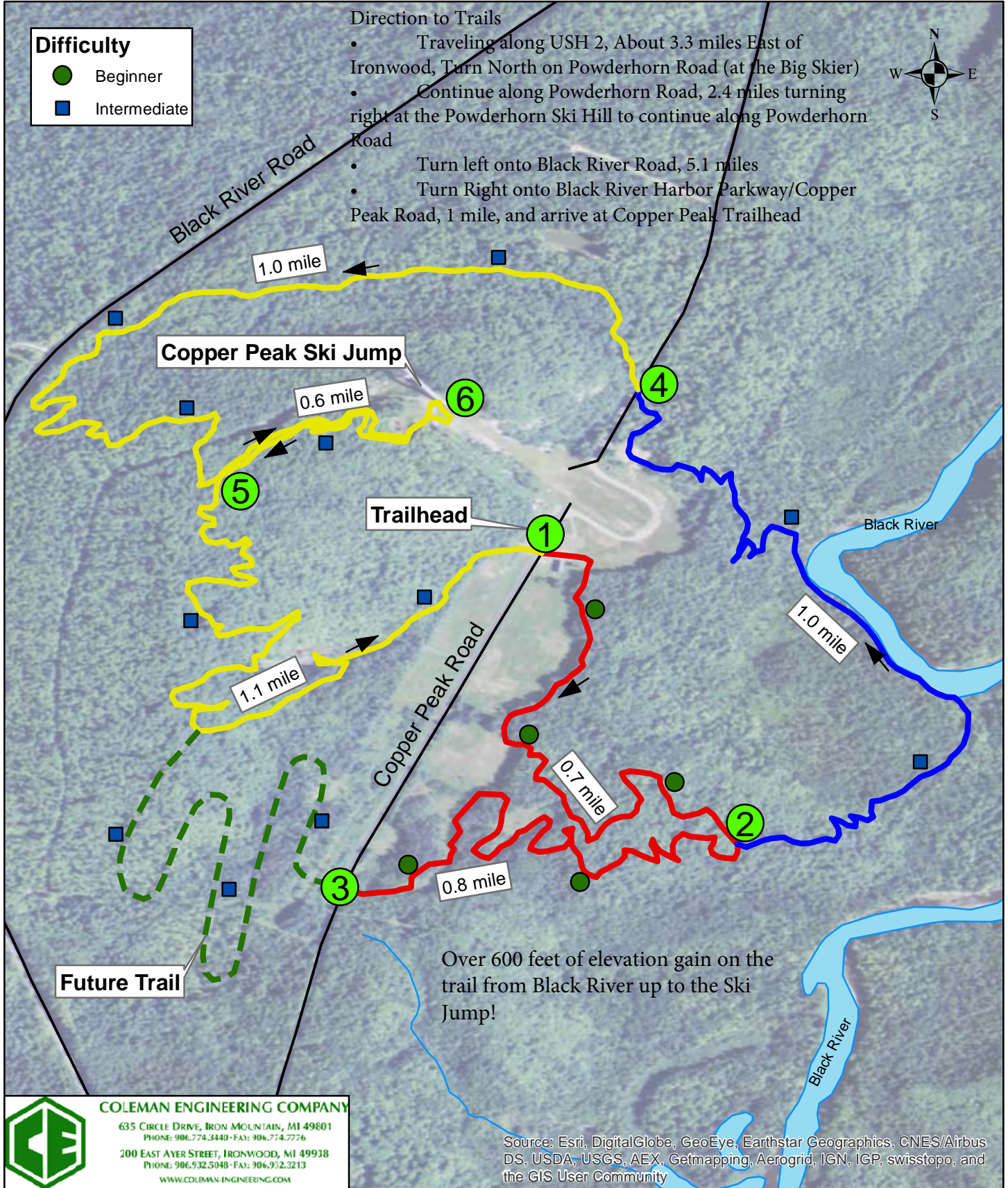


Copper Peak Mountain Bike Trails

Difficulty

- Beginner
- Intermediate

- Direction to Trails**
- Traveling along USH 2, About 3.3 miles East of Ironwood, Turn North on Powderhorn Road (at the Big Skier)
 - Continue along Powderhorn Road, 2.4 miles turning right at the Powderhorn Ski Hill to continue along Powderhorn Road
 - Turn left onto Black River Road, 5.1 miles
 - Turn Right onto Black River Harbor Parkway/Copper Peak Road, 1 mile, and arrive at Copper Peak Trailhead



CE
COLEMAN ENGINEERING COMPANY
 635 CIRCLE DRIVE, IRON MOUNTAIN, MI 49801
 PHONE: 906.774.3440 • FAX: 906.774.7776
 200 EAST AYER STREET, IRONWOOD, MI 49938
 PHONE: 906.932.5048 • FAX: 906.932.3213
 WWW.COLEMAN-ENGINEERING.COM

Source: Esri, DigitalGlobe, GeoEye, Earthstar Geographics, CNES/Airbus DS, USDA, USGS, AEX, Getmapping, Aerogrid, IGN, IGP, swisstopo, and the GIS User Community